



Return Activated Sludge Piping Replacement at Activated Sludge Plant No. 1, Project No. P1-129



Rob Thompson
Assistant General Manager
October 3, 2018
Operations Committee



RAS Piping Replacement

- Activated Sludge Plant 1 (built in 1974) provides 90 mgd of treatment capacity
- Divided into two halves, both need to be in service for normal operation
- 220 feet of 30-inch piping corroding, causing multiple leaks



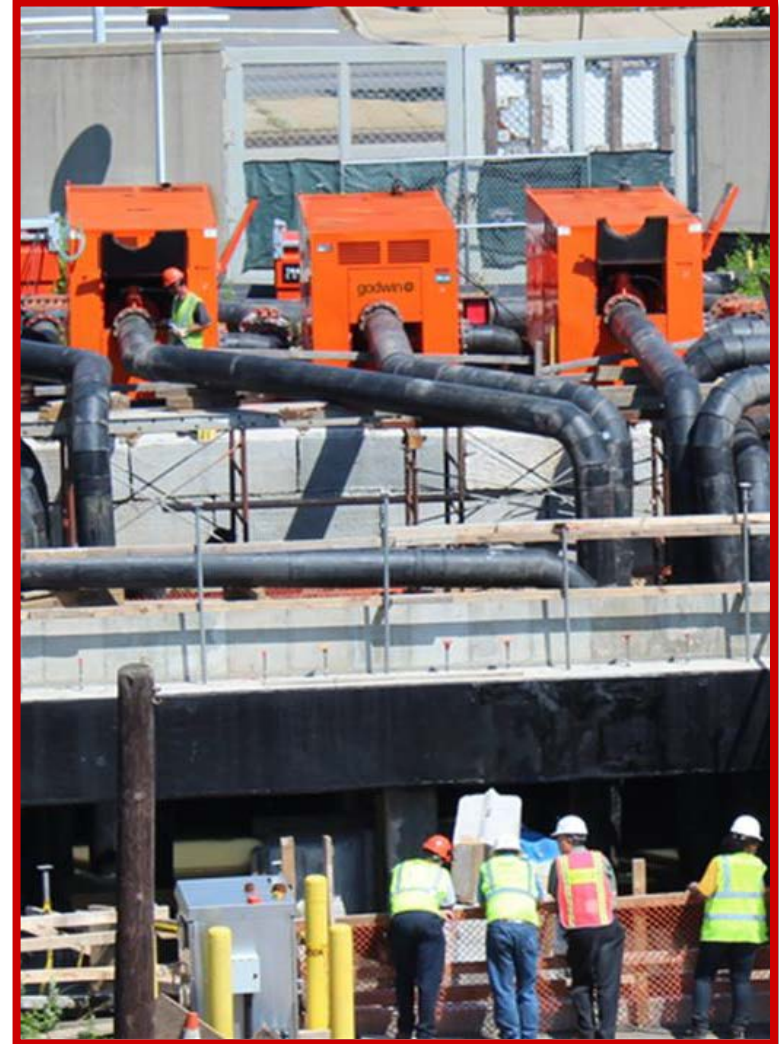
RAS Piping Replacement

- Tight spaces make construction difficult
- Construction requires full bypassing of pump station
 - Avoids overlap between construction and operational activities
 - Eliminates risks of leaks during construction



Bypass Pumping

- Full bypass pumping needed for 9 months
- Propose to use 3 engine-driven pumps with piping and controls
- Original plan anticipated Contractor to rent pumping
- Similar need for bypass pumping on Plant 1 Headworks Rehab, other projects and pump stations
- Propose to purchase pumps instead of renting



Project Budget

Current Budget	Requested Budget
Construction Cost	
\$4.7 million	\$5.8 million
Project Budget	
\$7.9 million	\$9.0 million



Recommendation

- Approve a budget increase of \$1,100,000 for Return Activated Sludge Piping Replacement at Activated Sludge Plant No. 1, Project No. P1-129, for a total budget amount of \$9,000,000.