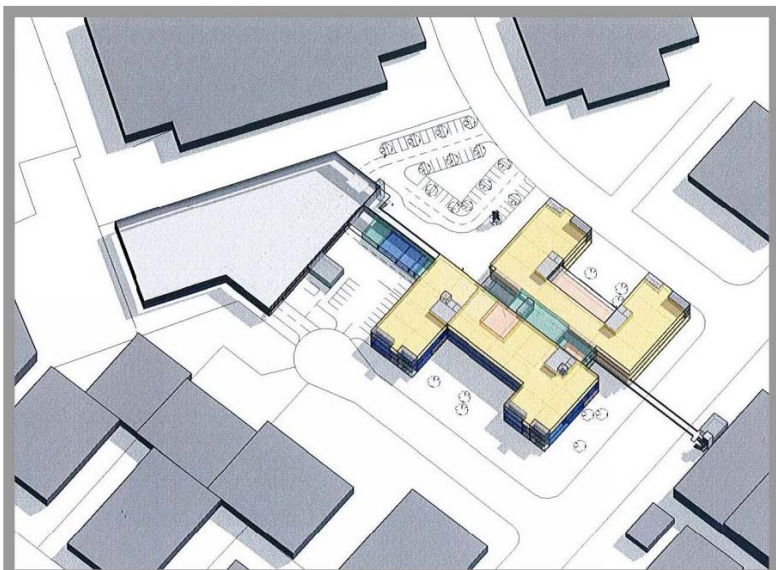




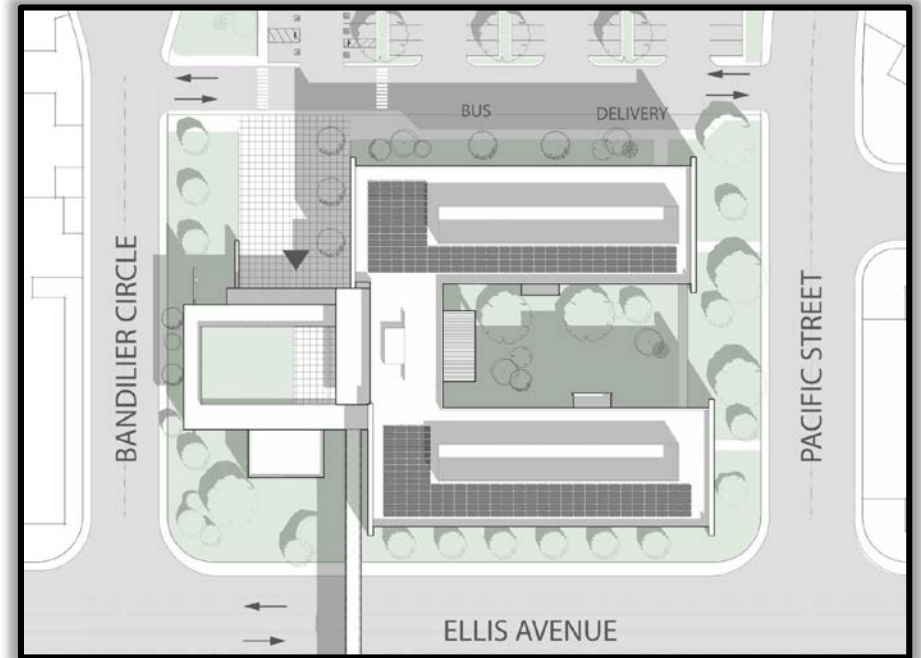
# P1-128 Headquarters Complex, Site and Security, and Entrance Realignment Program



**Rob Thompson**  
**Assistant General Manager**  
**October 3, 2018**  
**Operations Committee**



# Headquarters Building – Conceptual Site Plan



# Conceptual Renderings



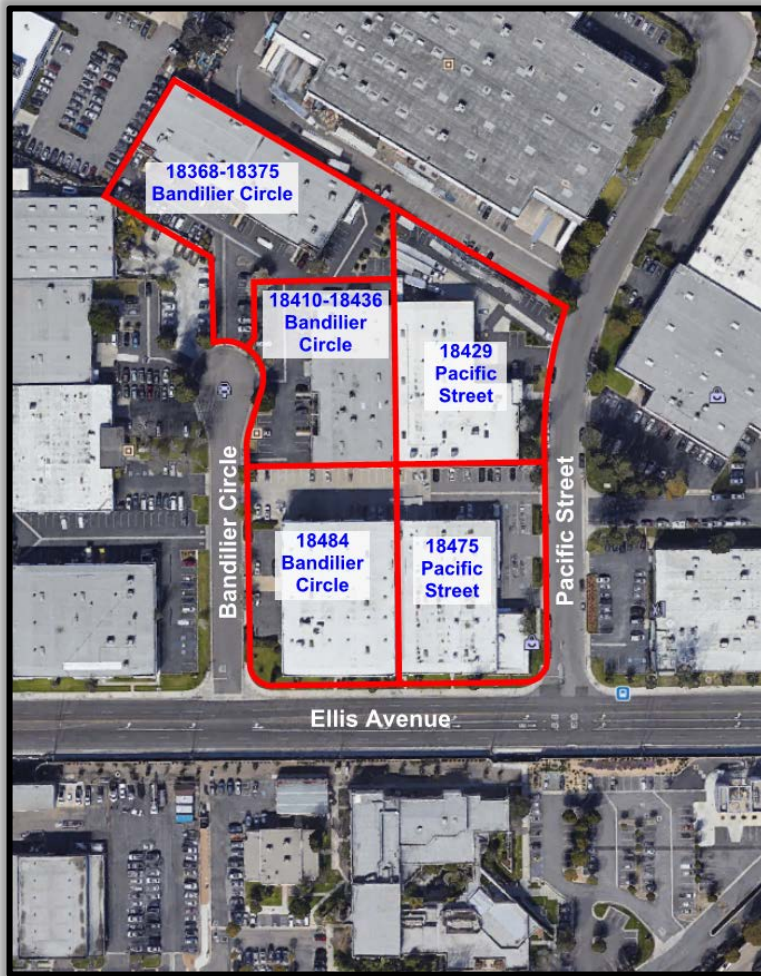
View From Ellis Avenue

# Conceptual Renderings



View From Plaza / Bandilier Circle

# Recommendations



Designate the currently-owned properties at 18475 Pacific Street, 18484 Bandilier Circle, 18429 Pacific Street, 18368-18375 Bandilier Circle, and 18410-18436 Bandilier Circle as the preferred alternative for the Headquarters Building, with a pedestrian bridge to Plant No. 1.

# Questions

